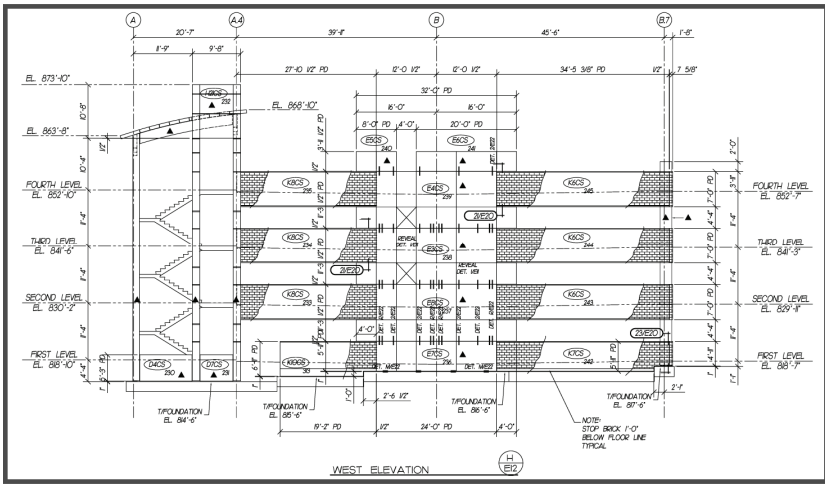


Wharf District Parking Garage

The Historic Wharf district of Morgantown, WV located on the Monongahela River has undergone tremendous revitalization and growth recently with new commercial and residential construction in what was once the old warehouse district. When the Morgantown Parking Authority was faced with the need for additional parking in the

district they turned to precast for the speed and economy of construction. The new \$4 million total precast Wharf District Parking Garage is a four story structure that accommodates 316-vehicles that includes 391 pieces of precast including double-tees, stair towers and thin set brick spandrels.



Thin bricks are shown placed in a form liner.

Architect
Burgess & Niple Architects,
Parkersburg, WV

Contractor
Carl Walker Construction,
Parkersburg, WV

Owner
Morgantown Parking
Authority, WV